

WordsWell

82 Cannon Street, Little Downham, Ely, Cambridgeshire, CB6 2SS 01353 698156.



Welcome to the Spring/Summer edition of your newsletter...

"The spring flowers are waving in the sunshine to brighten our days as you look forward to the summer and your holidays. I have very good reason for feeling exceptionally happy as Murray and I will be welcoming Ian into our family in early June."

Janet O'Keefe

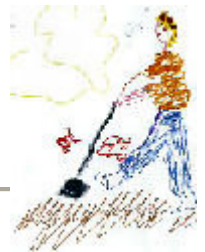
A warm welcome...



Juli Prattis has joined Wordswell as a Speech and Language Therapy Assistant. For the last couple of years she has been employed by Norfolk Portage Service working with pre-school children with Special Needs including communication and speech and language problems. Before this she worked for 4 years as a volunteer for Fenland Portage Service. She also worked for IPSEA on their helpline providing educational advice for parents going through the Statementing process. Juli's youngest child has ASD so she is very aware of the parent's perspective. Julie will be working very closely with Janet and Fiona to provide a quality service in the clients' home for children and adults on Monday, Wednesday and Friday.

Farewell...

There have been some exciting changes at Wordswell. As some of you are already aware Sarah Alhassan and Linda Packer both left us in February. Lin had been with Wordswell since the very beginning and was an invaluable help to Janet in every way and will be missed by many clients as well. We wish her every happiness in her 'early' retirement. Sarah has been an excellent PA and we wish her well for the future.



Snap4kids Nursery Groups...

As many of you will already know, Wordswell have formed an alliance with Snap4kids Nurseries. Snap have four separate nurseries in Cambridgeshire: Cambridge, Ely, Hauxton and Little Stukeley. Snap4kids are committed to the development of your children aged 3 months to 5 years and offers a relaxed and happy environment for playful and creative learning in partnership with you as parents and carers.

Weekly classes in dance, drama and music with visiting specialists embrace and enhance their established language, literacy and numeracy programmes. Wordswell will help develop and support specific communication focussed sessions.

Children with special needs, including communication difficulties, are welcome at Snap4kids. Together Wordswell and Snap! are working towards greater inclusion for your children and have plans to run phonological awareness.

Janet Robertson, Snap4kids Co-Director commented "We will be looking to develop your children's non-verbal communication skills including their ability to listen in a variety of ways. Your children will learn to take turns and also to work as a team. And it will be so much fun!"



For information on all Snap4kids settings phone: 01223 477413.

E-mail info@snap4kids.co.uk or visit their website:

www.snap4kids.co.uk

or telephone Wordswell on 01353 698156 for information on the specific groups and services we can offer.

Business Development Seminars...

From October 2005 Wordswell are co-ordinating monthly Business Development Seminars for therapists, teachers and other professionals, covering subjects as diverse as

- Advertising & Marketing
- Finances
- Contracts
- Business planning
- Networking & Mentoring
- Websites & IT
- Work Life Balance
- Legal & Employment Issues.

Some of the speakers who have already agreed to give a talk are:

- Chris Billington-Hughes from Results Corp UK
- Mitchell Burden, Bulley Davey, Chartered Certified Accountants.
- Ian Ross, Director, Vievolve
- Carmel McConnell, Author and social entrepreneur
- Richard Hawkes, Organisational Development Manager, Slough Borough Council
- Janet Farrugia, Speech and Language Therapist, Director, Say & Play
- Peter Quest, Managing Director, Quest Business Start-Up Ltd

These meetings are to be held on the first Friday of each month at Wyboston Lakes Training and Conference Centre. For further information contact: janetokeefe@wordswell.co.uk or see our website.

Views on Ageing...

Do you realize that the only time in our lives when we like to get old is when we're kids?
If you're less than 10 years old, you're so excited about aging that you think in fractions

"How old are you?" "I'm four and a half!"

You're never thirty-six and half

You're four and a half, going on five!

That's the key

You get into your teens, now they can't old you back.

You jump to the next number ... or even a few ahead.

"How old are you?" "I'm gonna be 16!"

You could be 13, but hey, you're gonna be 16!

And then the greatest day of your life ... you become 21.

Even the words sound like a ceremony ... YOU BECOME 21.

YESSSS!!!

But then you turn 30.

Ooooooh .. what happened there?

Makes you sound like bad milk

He TURNED ; we had to throw him out.

There's no fun now.

You're just a sour-dumpling.

What's wrong? What's changed?

You BECOME 21, you TURN 30, then you're PUSHING 40.

Whoa!

Put on the brakes ... it's all slipping away.

Before you know it, you REACH 50 and your dreams are gone.

But wait!!! You MAKE IT to 60

You didn't think you would!

So you BECOME 21, TURN 30, PUSH 40, REACH 50 and MAKE IT to 60

You've built up so much speed that you HIT 70!

After that it's a day-by-day thing; you HIT Wednesday!

You get into your 80s and every day is a complete cycle;

You HIT lunch, you TURN 4.30; you REACH bedtime.

And it doesn't end there

Into the 90s, you start going backwards...

"I was JUST 92".

Then a strange thing happens.

If you make it over 100, you become a little kid again.

" I'm 100 and a half!"

May you all make it a healthy 100 and a half!!



Safety Issue...



Smoke Alarms – how many times have we seen advertisements for smoke alarms to be installed in homes – what they have failed to mention is there are special types of alarms available for the deaf and hard of hearing.

There are different types of alarms, which react in different ways as soon as smoke is detected. One has a high pitched noise, another type is a pad that vibrates (this needs to be placed under a pillow or mattress), there is a page to carry around (this is connected to a multi-alert system) and there is a strobe light which flashes once smoke is detected.

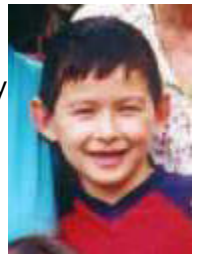
For further information about the types of alarms systems for deaf people contact: www.rnid.org.uk and click on the fact sheet section under "special equipment" or ring 0808 808 0123



Move to Senior School...

When your child makes the inevitable move to senior school it can be worrying, this is especially so when your child has Asperger's Syndrome – Janet recently received a letter from Ben and Sharon and as you will see from this excerpt it can be a positive experience ...

"So far everything is very positive for Ben at secondary school. The support unit have been great and have picked up on things about Ben that I hadn't even told them about. They have already helped him to write a Social Story about an on going problem and are very good at communicating with me over the phone if they think Ben has a problem. It's such a relief to have a school that understands Ben's problems. I have been dreading secondary school but this has turned out to be the best time of Ben's education"



Email: janetokeefe@wordswell.co.uk
Tel & Fax: 01353 698 156