



## The National Autistic Society's Professional Conference

16 & 17 March 2010 - Renaissance Manchester Hotel, Manchester

# Addressing the challenges together

This two day conference will be a unique opportunity for senior professionals to discuss best practice, debate the Government's new autism strategy and share each other's learning.

- > **Keynote sessions** provide an overview to the changing autism environment
- > **Expert seminars** give you practical strategies to implement with your colleagues
- > **Breakfast discussions** allow you to network with peers and debate approaches



Accept difference. Not indifference.

[www.autism.org.uk/March2010](http://www.autism.org.uk/March2010)

# The National Autistic Society's Professional Conference

16 & 17 March 2010 - Renaissance Manchester Hotel, Manchester



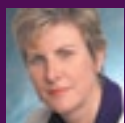
## Addressing the challenges together

### Welcome

I'm delighted to be chairing the editorial board for **The National Autistic Society's first ever Professional Conference**. We want to give professionals working in the field of autism a unique opportunity to come together, discuss best practice and share each other's learning.

Over two days, we aim to provide a balanced perspective on the current challenges facing professionals. Keynote sessions will present an overview of the changing autism environment and a series of expert seminars will give you practical strategies to share with your colleagues. At our informal breakfast discussions and evening panel debate you will get the chance to meet and share ideas with other professionals.

I strongly believe that by addressing our shared challenges together, we can help to raise standards and deliver direct benefits to people with autism, and their families.



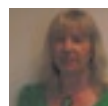
### Carol Povey

Head of Adult Services and Responsible Individual, **The National Autistic Society** and chair of the **Professional Conference editorial board**

### Who should attend:

- > **Education professionals** from mainstream schools, special schools and local authorities
- > **Directors** and **senior managers** with responsibility for local authority autism service provision
- > **Directors** and **senior managers** at adult service providers
- > **Clinicians** across the professional field including psychiatrists, psychologists, speech and language therapists, occupational therapists, GPs, and nurses

### Editorial board



### Dr Juli Crocombe

Consultant in Developmental Neuropsychiatry and Learning Disability  
**St George's Hospital, South Staffordshire**



### Suzie Franklin

Parent



### Dr Gina Gómez de la Cuesta

Action Research Leader  
**The National Autistic Society**



### Dr Judith Gould

Chartered Consultant Clinical Psychologist Director  
**The NAS Lorna Wing Centre for Autism**



### Robert Hubbard

Chief Executive and Principal  
**The Prior's Court Foundation**



### Dr Glenys Jones

Lecturer and Researcher  
**The Autism Centre for Education and Research  
The University of Birmingham**



### Professor Sue Leekam

Chair in Autism Research  
**Cardiff University**



### Richard Mills

Research Director and Hon Sec  
**Research Autism**



### Joshua Muggleton

A young adult on the autism spectrum



### Jane Vaughan

Regional Coordinator London and South East  
**The National Autistic Society**

**Register today and SAVE £50  
on your delegate fee**

Special early booking rates  
apply before 4 December 2009





# Evening event & breakfast discussions

## Evening Question Time

Following day one, the evening debate will be a 'Question Time' style look at a topical issue and will be open to all conference delegates. The chair and panel will be announced closer to the time but expect some strong opinions and lots of questions from the floor.

"It's really important that knowledge is shared among people with different experiences and backgrounds in the world of autism. We want delegates to learn about good practice that is relevant and useful in their professional lives."

**Suzie Franklin**, Parent

"I strongly believe that theory alone is not enough and that practical solutions are essential if we are to make a difference. I believe that this conference will deliver that."

**Joshua Muggleton**, A young adult on the autism spectrum

## Breakfast Discussions

At 8am on day 2 there will be facilitated networking sessions hosted by members of our editorial board, whereby practitioners can debate a current topic over breakfast. The discussion topics will be announced closer to the conference date, where delegates will have the opportunity to sign-up to the session of their choice. Please note that these sessions will be open only to those who have pre-registered.

### Call for posters

There will be an opportunity for delegates to submit a poster on the theme of '**Sharing case studies and learning from real-life examples to promote best practice**'. The posters will be displayed throughout the conference and poster discussions and questions to authors will take place during lunch breaks on both days.

The deadline for applications is **Friday 13 November**. Visit [www.autism.org.uk/March2010](http://www.autism.org.uk/March2010) for more details.



### NAS Conference and Events Team

**Tel:** 0115 911 3367

**Email:** [conference@nas.org.uk](mailto:conference@nas.org.uk)

**Fax:** 0115 911 3362

6th Floor Castle Heights  
72 Maid Marian Way  
Nottingham NG1 6BJ



Open here to view the full programme

Register at [www.autism.org.uk/March2010](http://www.autism.org.uk/March2010)

# Programme Day One – 16 March 2010

- 08:30 **Registration and coffee**
- 10:15 **Chairman's welcome**  
**Professor Chris Cullen**  
 Professor of Clinical Psychology  
**Keele University**  
 Director of Psychological Services  
**North Staffordshire Combine Healthcare NHS Trust**
- 10:25 **Welcome and introductions**  
**Mark Lever**  
 Chief Executive, **The National Autistic Society**
- 10:40 **Sponsor message**
- 10:45 **Making care better for people with autism**  
**Baroness Barbara Young**  
 Chair, **Care Quality Commission**
- 11:25 Refreshments
- 12:00 **Key issues in transition**  
**Dr Glenys Jones**  
 Lecturer and Researcher  
**The Autism Centre for Education and Research,  
 University of Birmingham**
- 12:40 **Lunch and an opportunity to view and discuss the posters**

## 13:45 The National Autistic Society's Seminar stream. Sessions 1A – 1D

### Education stream

**1A Special, specialist or mainstream schooling? The impact on child and family**

**Debbie Waters**

Project Officer Family Services  
**The National Autistic Society**

### Adult stream

**1B Planning support for adults with autism**

**Megan Lloyd**

Self-directed Support  
 Coordinator

**& Kiranpreet Rehal**

Community Care Case Worker  
**The National Autistic Society**

### Commissioning stream

**1C Consultation groups: involving people with higher support needs**

**Anna Ostmeier**

Participation Officer

**& Lesley Waugh**

Person-Centred Planning  
 Coordinator

**The National Autistic Society**  
 &

**Max Horne**

**Mark Axford**

**Charlotte Lowry**

### Clinical stream

**1D Dilemmas in the diagnosis of autism spectrum disorders**

**Dr Judith Gould**

Chartered Consultant Clinical  
 Psychologist and Director

**The NAS Lorna Wing Centre  
 for Autism**

## 14:25 Seminar transition time followed by Seminar sessions 2A – 2D

14:30 **2A Peer awareness training to address bullying**

**Annie Etherington**

Senior Advisory Teacher,  
 Autism Spectrum Team

**London Borough of Barnet**

**& Joshua Muggleton**

Speaker and student

**2B Held back by the Senses?**

**Nicci Paine**

Occupational Therapist

**2C Delivering community based health services for adults with Asperger syndrome**

**Chris Austin**

Team Manager

**Liverpool Asperger Team**

**2D Mental Health Co-morbidity**

**Dr Ian Hall**

Consultant Psychiatrist

**Community Learning**

**Disability Service**

15:10 Refreshments

15:40 **Self-injurious behaviour in autism spectrum disorders**

**Professor Chris Oliver**

Professor of Neurodevelopmental Disorders

**University of Birmingham**

16:20 **Panel Q & A session**

16:50 **Chairman's conference summary**  
**Professor Chris Cullen**

17:30 **Evening debate**

A 'Question Time' style look at a topical issue. The chair and panel will be announced closer to the time but expect some strong opinions and lots of questions from the floor.

Register at [www.autism.org.uk/March2010](http://www.autism.org.uk/March2010)

Tel: 0115 911 3367 Email: [conference@nas.org.uk](mailto:conference@nas.org.uk) Fax: 0115 911 3362



## Day Two – 17 March 2010

08:00 **Breakfast discussions on topical issues**

08:30 Refreshments

09:15 **Chairman's welcome**  
**Professor Tony Charman**, Chair in Autism Education  
 Centre for Research in Autism and Education  
 The Institute of Education, London

09:30 **Making sense of behavioural challenges: implications for support, prevention and service development**  
**John Clements**  
 Clinical Psychologist

### 10:10 Seminar sessions 3A – 3D

#### Education stream

**3A The ASD strategic action plan for Wales: history, objectives and early outcomes**

**Hugh Morgan OBE**  
 CEO, **Autism Cymru**  
 and Implementation Manager  
**ASD Strategic Action Plan**

#### Adult stream

**3B Getting older with autism: views from research and a personal perspective**

**Dr Gina Gómez de la Cuesta**  
 Action Research Leader  
**The National Autistic Society**  
 & **John Booker**  
 Person with Asperger syndrome

#### Commissioning stream

**3C Commissioning from the viewpoint of a director of services**

**Veronica Jackson**  
 Executive Director People, Communities and Society  
**Oldham Council**

#### Clinical stream

**3D The use of psychotropic medication in people with autistic spectrum disorder**

**Dr Juli Crocombe**  
 Consultant in Developmental Neuropsychiatry and Learning Disability  
**St George's Hospital, South Staffordshire**

### 10:50 Refreshments followed by Seminar sessions 4A – 4D

**4A Brilliant beginnings, dazzling outcomes: social language learning and intervention in the early childhood years**

**Diane Twachtman-Cullen**, Editor-in-Chief  
**Autism Spectrum Quarterly**

**4B The evidence base for autism treatment**

**Richard Mills**  
 Research Director and Hon Secretary  
**Research Autism**

**4C The Rotherham autism communication team: a good practice case study**

**Gill Capaldi**  
 Team Leader  
**Rotherham Autism Communication Team**

**4D Professor Ann Le Couteur**

Professor of Child and Adolescent Psychiatry  
**Newcastle University**

### 12:00 Seminar transition time followed by Seminar sessions 5A – 5D

12:05 **5A**

Visit [www.autism.org.uk/March2010](http://www.autism.org.uk/March2010) for programme outline

**5B Participation**

**Dr Dinah Murray**

**5C Commissioning within a mental health structure**

**Dr Kobus van Rensburg**  
 Clinical Psychologist  
**Northamptonshire NHS Healthcare Trust Communication Team**

**5D**

Visit [www.autism.org.uk/March2010](http://www.autism.org.uk/March2010) for programme outline

12:45 **Lunch and an opportunity to view and discuss the posters**

14:40 Refreshments

13:45 **Chairman's welcome back**  
**Professor Tony Charman**

15:10 **A personal perspective**  
**Dean Beadle**  
 Conference speaker with Asperger syndrome

14:00 **ABA – Danish evaluation and ethical concerns**  
**Professor Kjeld Hogsbro**  
 Professor of Social Work  
**Aalborg University, Denmark**

15:50 **Panel Q & A session**

16:20 **Close of conference**  
**Professor Tony Charman**

# The National Autistic Society's Professional Conference

16 & 17 March 2010 - Renaissance Manchester Hotel, Manchester

Brochure code HLP

## To make a booking:

**Online** www.autism.org.uk/March2010  
**Email** conference@nas.org.uk  
**Tel** 0115 911 3367  
**Fax** 0115 911 3362  
**Post** NAS Conference and Events Team  
6th Floor, Castle Heights  
72 Maid Marian Way,  
Nottingham NG1 6BJ

## How did you hear about this conference?

Please write here

## NAS Internal

Delegates: T1 Code:  
T2 Code: T3 Code:  
Nominal Code:

## Rates

### Early booking rate

(book by 4 December 2009)

### Standard rate

#### Conference rates

£310 + VAT\*

£360 + VAT\*

#### NAS Members rate

£324 + VAT\*

\*Please note changes in VAT from January 2010

## Please confirm which seminars you will be attending at the conference

Day 1	Education	Adults	Commissioning	Clinical
	<input type="checkbox"/> 1A <input type="checkbox"/> 2A	<input type="checkbox"/> 1B <input type="checkbox"/> 2B	<input type="checkbox"/> 1C <input type="checkbox"/> 2C	<input type="checkbox"/> 1D <input type="checkbox"/> 2D
Day 2	<input type="checkbox"/> 3A <input type="checkbox"/> 4A <input type="checkbox"/> 5A	<input type="checkbox"/> 3B <input type="checkbox"/> 4B <input type="checkbox"/> 5B	<input type="checkbox"/> 3C <input type="checkbox"/> 4C <input type="checkbox"/> 5C	<input type="checkbox"/> 3D <input type="checkbox"/> 4D <input type="checkbox"/> 5D

## Booking contact

If you are booking on behalf of someone else, please provide your contact details here.

Title	First name	Surname
Job title	Tel	
Email		

## Delegate details

Title	First name	Surname
Job title	Tel	
Organisation	Fax	
Email		
Address		
	Town	County
Postcode	Country	

The National Autistic Society would like to update you from time to time in order to inform you about our work.

If you **do not** want to receive any mailings from The National Autistic Society, **please tick this box**

Keeping in touch with you via email can help to keep our costs down. **Please tick this box if you are happy to receive emails from us**

## NAS membership number:

## Any special requirements

i.e. Access/Dietary/Support/Other?

## Terms & conditions

### Conference fees

All prices include entrance to the conference and seminar sessions, lunch, all refreshments and a comprehensive delegate pack. Please note changes in VAT from January 2010.

### Delegates attending from EU Countries

are exempt from paying VAT only when their organisation is VAT registered within their own country. Confirmation of the VAT registration number is required at the time of booking, upon receipt of which a delegate invoice will be raised excluding the VAT amount. If the organisation is not VAT registered, a delegate invoice will be raised including the VAT amount.

### Delegates who are attending conferences from outside EU Countries.

VAT will be charged on the invoice but you are able to claim back the VAT charge.

### Payment

A cheque made payable to "The National Autistic Society" should accompany your booking form, unless you require an invoice to be forwarded to your organisation.

### Payment must be received before the conference date.

If payment is not received, delegates will be asked to guarantee payment with a personal credit card on the day.

**Overseas Payments.** A sterling cheque made payable to "The National Autistic Society" should accompany your booking form. In some circumstances, we are able to accept payments by BACS. Please contact our office for more details.

### Payment note for NAS Internal Delegates

Please ensure that you have written your nominal code and your T1, T2 and T3 charge codes in the relevant space on your booking form.

### Refund Policy and Cancellations

If an event is cancelled, delegates will be given as much notice as possible and given either a full refund (if paid in full) or a credit note (if payment not yet made).

### Individual delegates who wish to cancel

their places must cancel in writing, at least 7 days prior to the event to receive a refund (less a £20 admin charge). If cancellation in writing is not received within this time, then the full conference fee will be charged. Delegate names can be substituted at any time up to 3 days prior to event.

### Amendments to Conference Programmes

We reserve the right to make amendments to our advertised conference programme and speakers.

## Payment details

### CHEQUE

Please find enclosed a cheque for £

Please make all cheques payable to The National Autistic Society

### INVOICE Please complete all details below

Invoice for the attention of

PO Number (if applicable)

Address

Postcode

Tel No

### CREDIT CARD

Card type

Card number

Start date

Expiry date

Security code

(3 digits on reverse)

Name on card

Signature

## ACCOMMODATION

I would like to reserve a room:  Single occupancy at £90 inc VAT per night and breakfast  
 Double occupancy at £100 inc VAT per night and breakfast

Arrival date /03/2010

Departure date /03/2010

No of nights

## Complete your credit card details above to make a hotel booking.

Accommodation costs are additional to the delegate fee. Delegates can book their accommodation through the NAS but a credit card number will be required to guarantee your accommodation. No hotel fees will be charged to this card prior to your stay. You will be expected to make full payment for your accommodation upon departure from the hotel. Non-arrivals (without prior notice) will be charged with the credit card details provided.